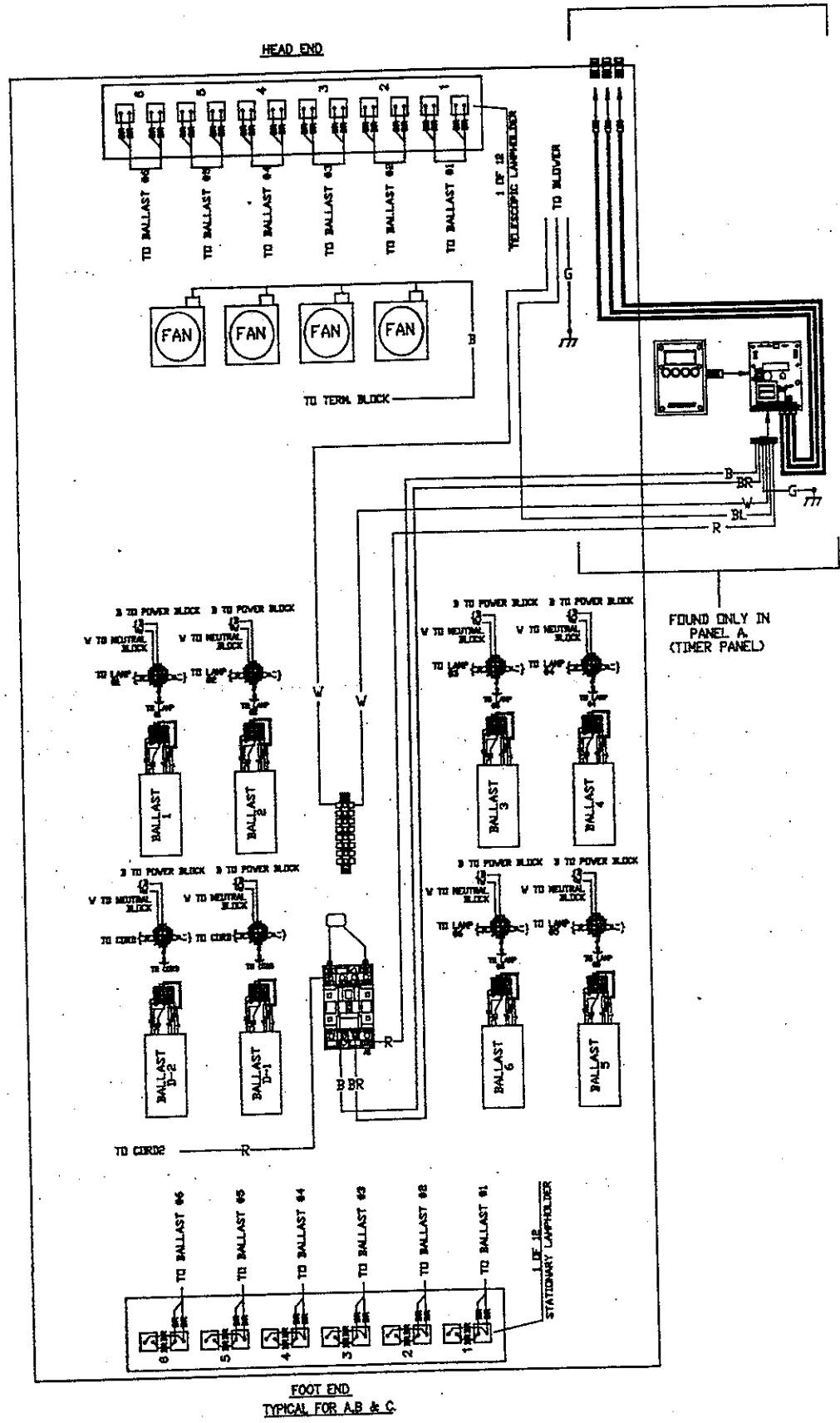
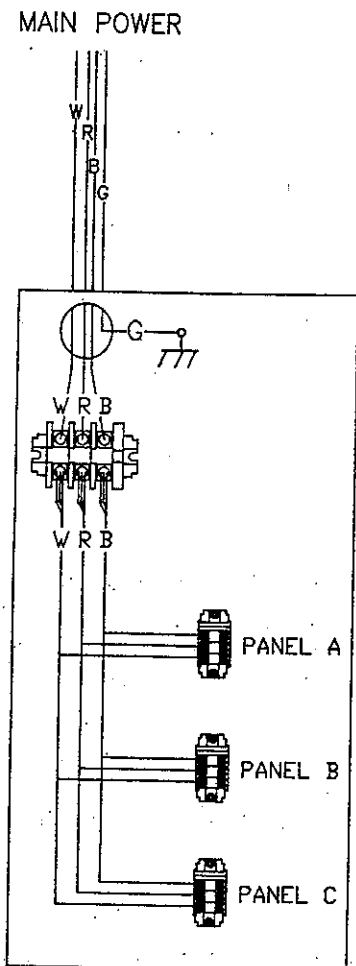


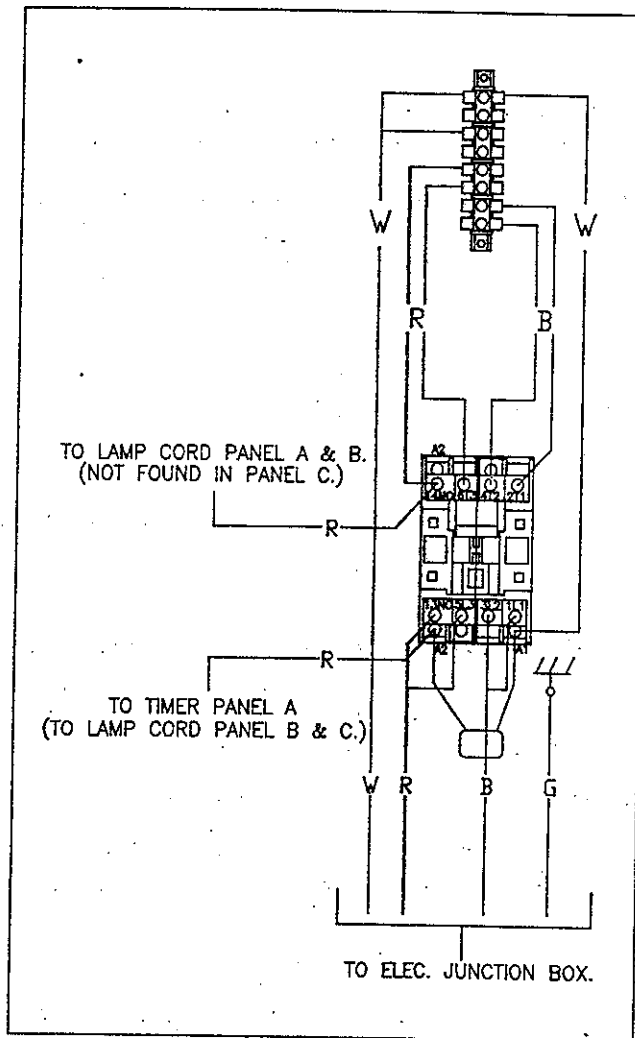
# WIRING DIAGRAM



# RELAY WIRING DIAGRAM

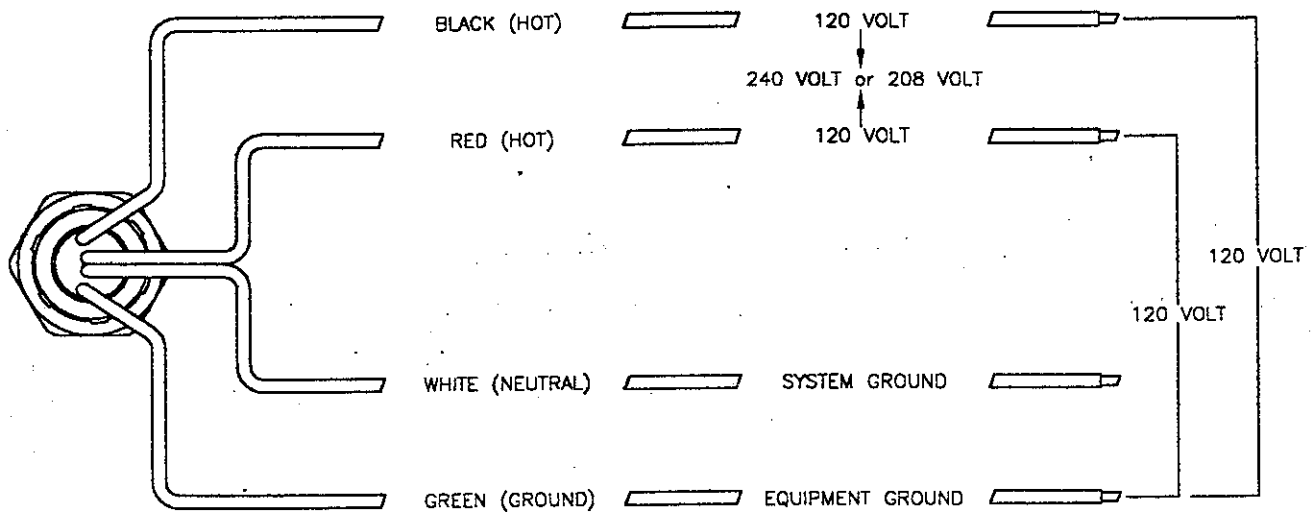


ELEC. JUNCTION BOX



RELAY WIRING DIAGRAM  
TYPICAL FOR PANEL A, B & C.

# SUPPLY WIRING DIAGRAM



## CIRCUIT REQUIRED

120/208 VOLT, 1Ø 60 AMP

120/240 VOLT, 1Ø 60 AMP

3/4" FLEXIBLE CONDUIT CONNECTION

ALL FOUR (4) POWER WIRES

6 GA. OR LARGER